

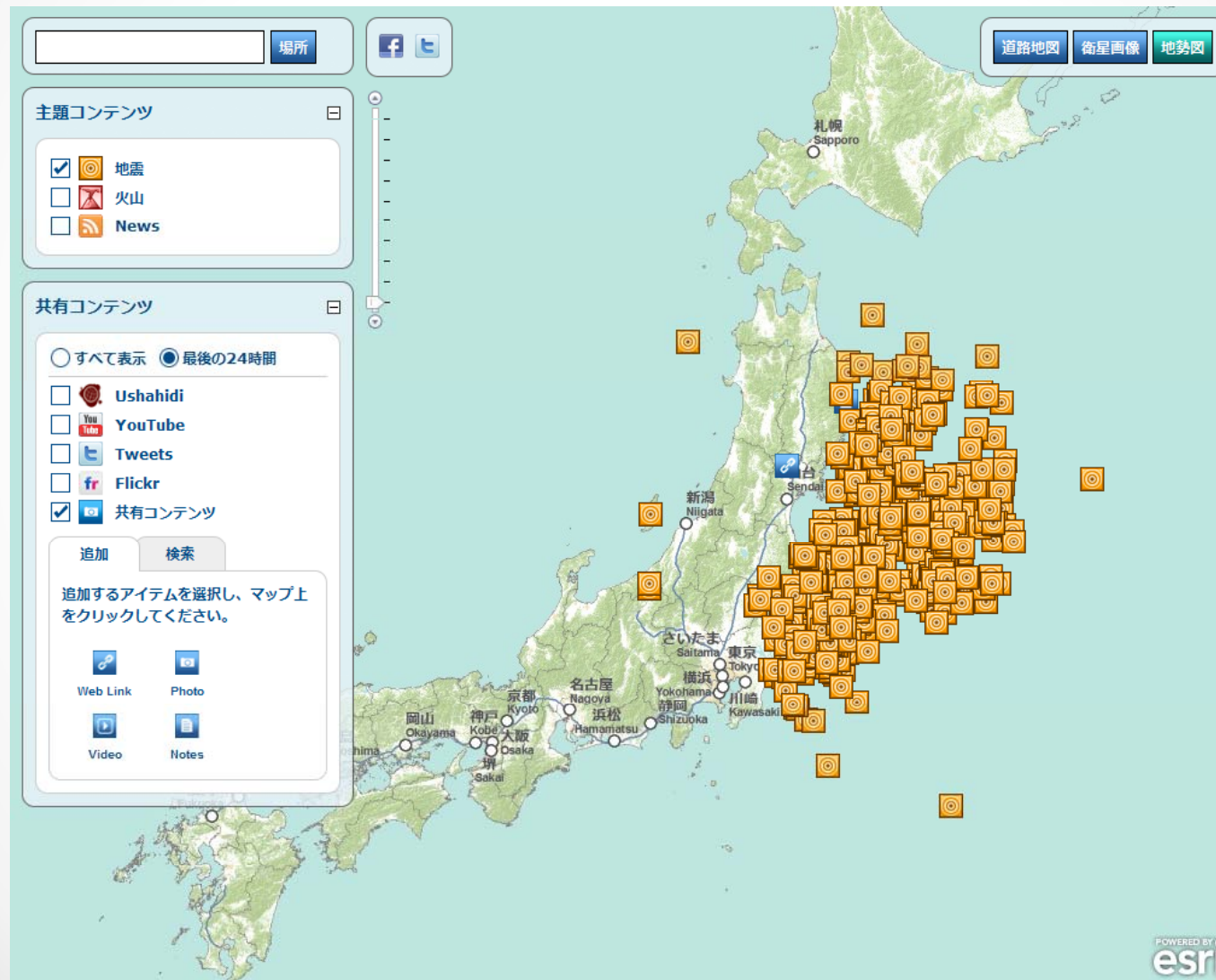
Appreciation for your participation !

RCCC APB

APB Director

Naoaki Yamanaka

Earthquake on March 11, 2011



Tsunami Impact

Yuriage in Natori

© Google, Digital Globe, f

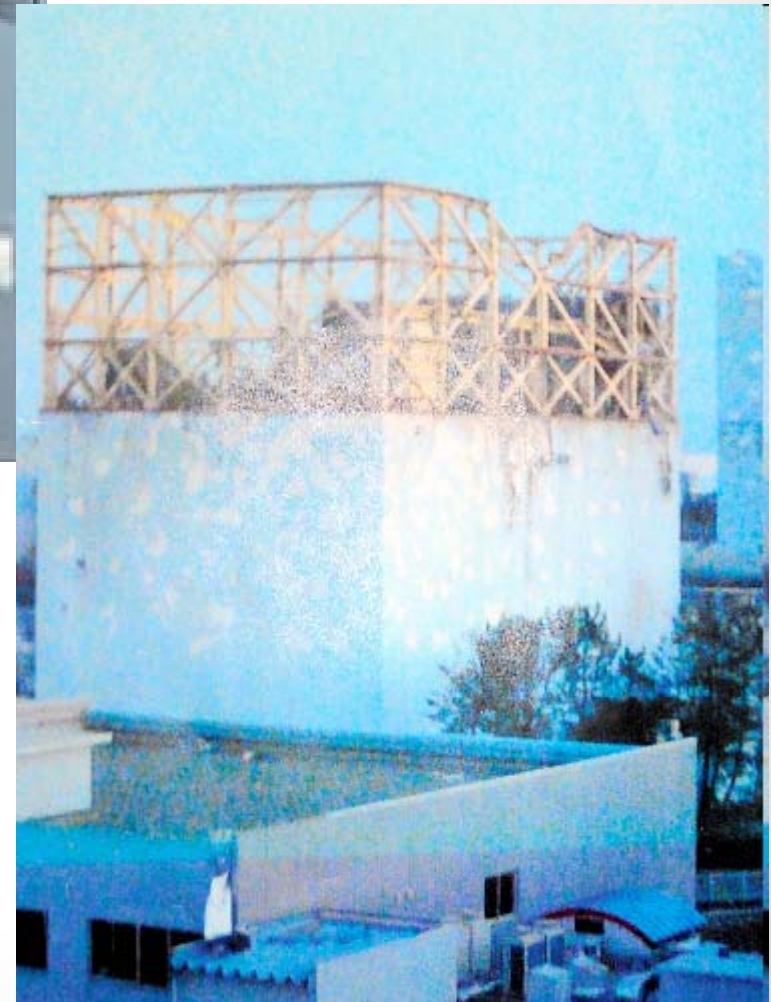


Kashima in Minamisoma

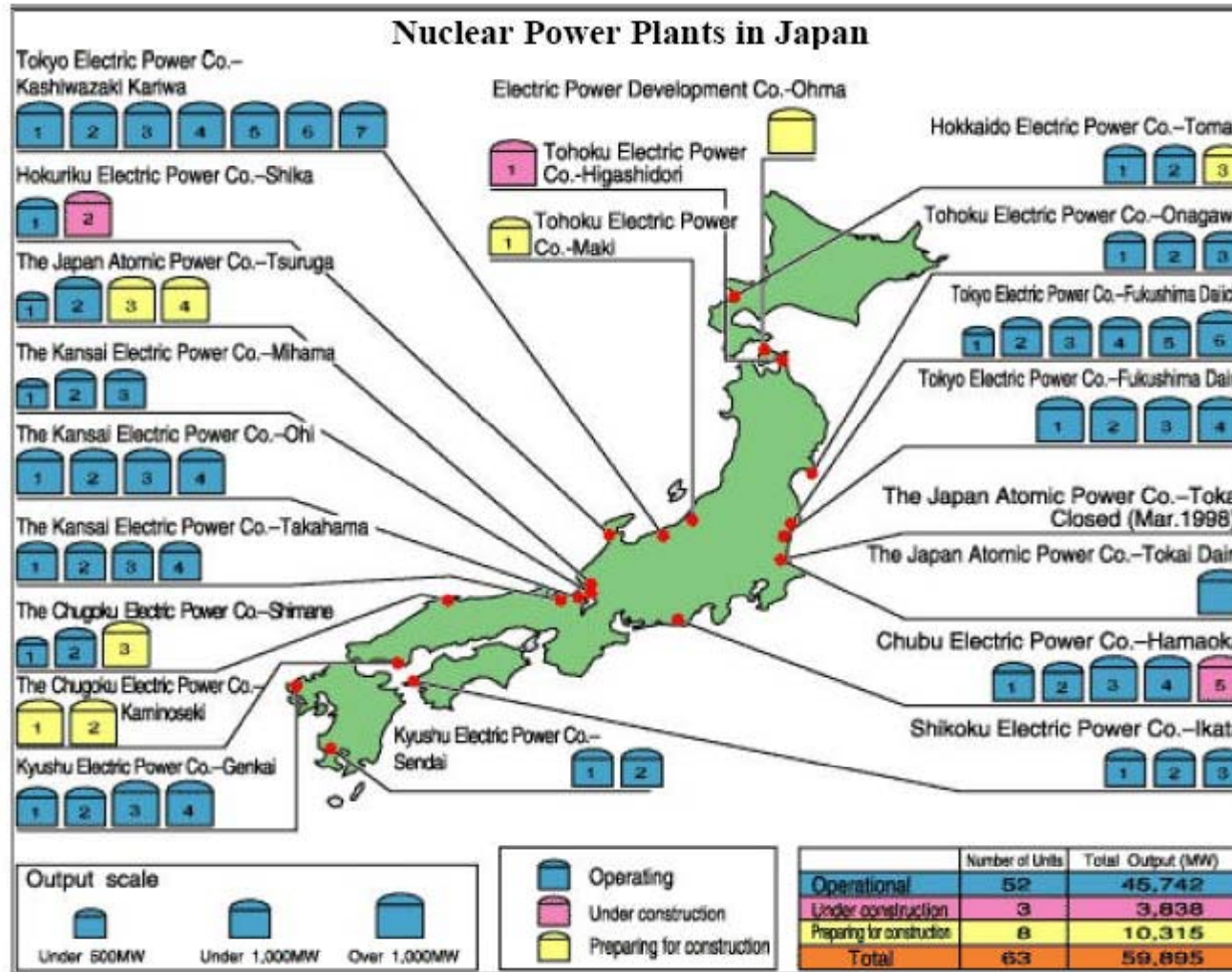
© Google, Digital Globe, GeoEye



Nuclear power plant



Nuclear power plants in Japan



Communication facilities were the worst affected.

通信設備の被害状況



- 中 Transmission lines
90 routes were cut off



- 通 18 buildings were fully
destroyed
23 buildings were flooded



- 65000 telephone poles were
destroyed by the flood



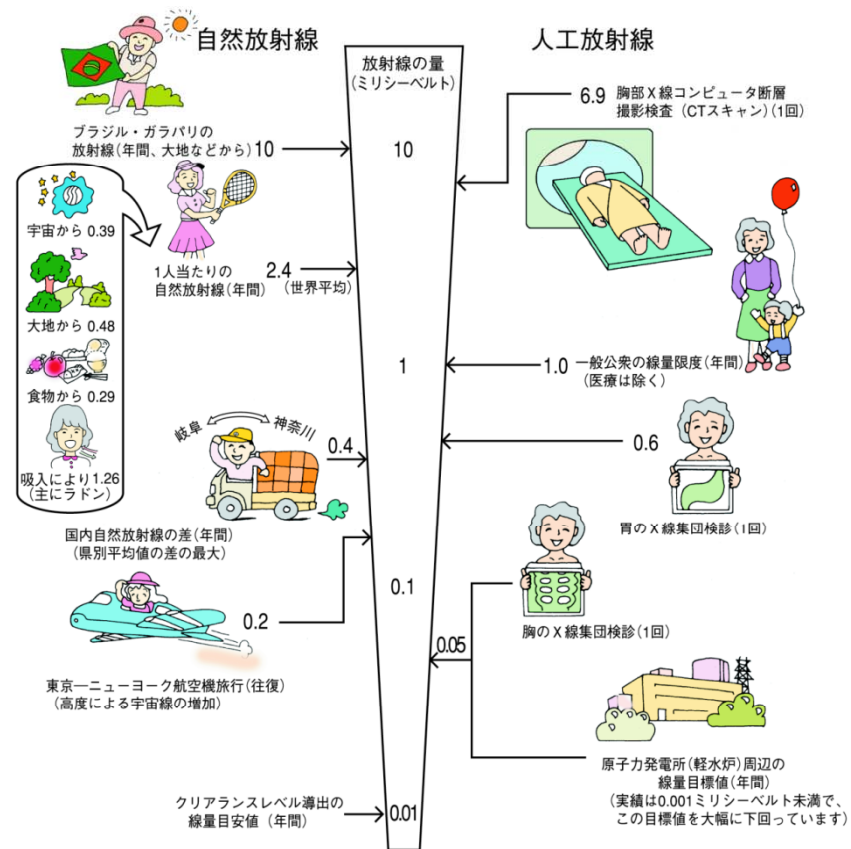
Earthquake, Tsunami and Radiation



Tokyo Yesterday = 0.060 micro SV/hour



日常生活と放射線

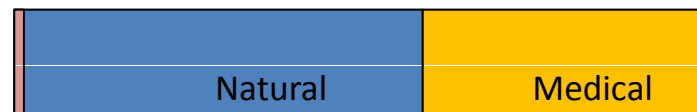


Air Plane NY-NRT
= 200 micro SV

ICC 2011 =
 $0.06 \times 24 \times 4 = 5.76$ micro SV

出典：資源エネルギー庁「原子力2004」 他

Parson live in USA



6200 micro SV / year

ICC 2011

Meeting Venue: Kyoto International Conference Center, Meeting Room ▪ C2

Date: 9 June 2011 Time: 13:00 to 17:00

Finalized Agenda:

*12:00-13:00

Registration & buffet Lunch in Meeting Room C2, Kyoto International Conference Center

*13:00-13:05

Briefing by APB CCC Chair, Qian Zhang

*13:00-13:10

Welcome and Introduction by APB Director

*13:10-13:20

Self-Introduction of Attendees

*13:20-13:30

Keynote Address President Byeong Gi Lee

*13:30-13:40

Foreword on Member Relations on behalf of Sergio Benedetto
by President Byeong Gi Lee

Meeting Venue: Kyoto International Conference Center, Meeting Room ▪ C2

*13:40-14:10

Presentation on “ComSoc Structure and Support programs” with Q&A
By the Membership Programs Development, Shri Goyal

*14:10-14:40

Presentation on “010-11 Activity Report and Action Plan in AP”
By APB Director, Naoaki Yamanaka

*14:40-15:00

Networking Coffee/Tea Break

*15:00-16:15

Briefing on Chapter Activities by Chapter Chairs (5 mins each)
3 Powerpoint Slides: Activities held in 2010, Planned Activities for 2011,
2-3 Main challenges faced by Chapter

*16:15-17:00

Open Discussion on “How to promote ComSoc activities and Provide Better Service to ComSoc members in AP region”
Facilitators: Qian Zhang and Fanny Su

*17:00-18:00

Catered Buffet Dinner in Meeting Room C2, Kyoto International Conference Center

Meeting Venue: Kyoto International Conference Center, Meeting Room ▪ C2

| | |
|-------------|--|
| 12:00-13:00 | Registration & buffet Lunch in Meeting Room C2, Kyoto International Conference Center |
| 13:00-13:05 | Briefing by APB CCC Chair, Qian Zhang |
| 13:00-13:10 | Welcome and Introduction by APB Director |
| 13:10-13:20 | Self-Introduction of Attendees |
| 13:20-13:30 | <u>Keynote Address</u> – President Byeong Gi Lee |
| 13:30-13:40 | Foreword on Member Relations on behalf of Sergio Benedetto By President Byeong Gi Lee |
| 13:40-14:10 | Presentation on “ComSoc Structure and Support programs” with Q&A By the Membership Programs Development, Shri Goyal |
| 14:10-14:40 | Presentation on “ <u>2010-11 Activity Report and Action Plan in AP</u> ” By APB Director, Naoaki Yamanaka |
| 14:40-15:00 | Networking Coffee/Tea Break |
| 15:00-16:15 | Briefing on Chapter Activities by Chapter Chairs (5 mins each) 3 Powerpoint Slides: Activities held in 2010, Planned Activities for 2011, 2-3 Main challenges faced by Chapter |
| 16:15-17:00 | Open Discussion on “How to promote ComSoc activities and Provide Better Service to ComSoc members in AP region Facilitators: Qian Zhang and Fanny Su |
| 17:00-18:00 | Catered Buffet Dinner in Meeting Room C2, Kyoto International Conference Center |

1_F

MAP

施設案内 Facilities

